

SPC

LVT

LOOSE LAY

Wood / Stone / Carpet  
木纹 / 石纹 / 毯纹

**PVC FLOORING**

PVC商用片材地板

Hospital  
Kindergarten  
Office  
Market



## CERTIFICATION 认证



### ISO 9001

ISO 9001 is for quality management. Quality refers to all those features of a product (or service) which are required by the customer.

Quality management means what the organization does to ensure that its products or services satisfy the customer's quality requirements and comply with any regulations applicable to those products or services.

ISO9001 属于质量管理体系。以保证产品从开发、设计、生产、安装和服务的质量模式。对质量保证的要求较全，以确保产品的质量。



### CE

Many products require CE marking before they can be sold in the EEA(European Economic Area comprises the 28 EU Member States and EEA EFTA Countries - Iceland, Lichtenstein and Norway). CE marking proves that your product has been assessed and meets EU safety, health and environmental protection requirements. It is valid for products manufactured both inside and outside the EEA, that are then marketed inside the EEA.

在欧盟市场 CE 标志属强制性认证标志，不论是欧盟内部企业生产的产品，还是其他国家生产的产品，要想在欧盟市场上自由流通，就必须加贴 CE 标志，以表明产品符合欧盟《技术协调与标准化新方法》指令的基本要求。这是欧盟法律对产品提出的一种强制性要求。



### ASTM

Is one of the oldest/largest non-profit standard academic groups in the United States. The main task is to develop characteristics and performance standards, test methods and procedural standards in the fields of materials/products/systems and services, and to promote the development and promotion of relevant knowledge. Although the ASTM standard is a standard set by the unofficial academic community, it has won the official trust of the American industry because of its high quality and adaptability. It has not only been adopted by various industrial circles in the United States, but also by the US Department of Defense and the federal government institutional adoption.

ASTM 是美国最老、最大的非盈利性的标准学术团体之一。主要任务是制定材料、产品、系统、和服务等领域的特性和性能标准，试验方法和程序标准，促进有关知识的发展和推广。虽然 ASTM 标准是非官方学术团体制定的标准，但由于其质量高，适应性好，从而赢得了美国工业界的官方信赖，不仅被美国各工业界纷纷采用，而且被美国国防部和联邦政府各部门机构采用。



### FLOOR SCORE

FloorScore® is the most recognized indoor air quality (IAQ) certification standard for hard surface flooring materials, adhesives, and underlayments. Developed by SCS with the Resilient Floor Covering Institute (RFCI), a leading industry trade association of flooring manufacturers and suppliers, it qualifies for many green building schemes including LEED v4, WELL, BREEAM, and CHPS.

FloorScore 认证是全球领先的独立认证：美国科学认证体系 (SCS) 和弹性地板覆盖物研究所 (RFCI) 相结合的第三方认证，经过严格的测试和认证，使室内空气质量符合健康排放标准的要求的表面地板。对挥发性有机化合物 (VOC) 进行评估，必须符合最严格的测量和健康为基础的规范。



### GREEN GUARD

Products that are GREENGUARD® Certified for low chemical emissions can contribute to the creation of healthier indoor environments and are scientifically proven to meet some of the world's most rigorous third-party chemical emissions Standards.

GREENGUARD 室内空气质量认证的简称，中文译名为绿色卫士。能获得 GREENGUARD 认证的产品，也证明产品通过了世界上最权威的室内空气质量认证测试。

UL GREENGUARD 室内空气质量标准是世界上最严格的室内空气质量标准，该标准为室内产品的低排放性建立相关要求，如建材、装潢、家具、清洁用品和电子产品等。



### SGS

SGS is the world's leading inspection, verification, testing and certification company. We are recognized as the global benchmark for quality and integrity.

SGS 是世界领先的检验、验证、测试和认证公司。我们被公认为质量和诚信的全球基准。



### GB

GB is Chinese national standard which is formulated by the Standardization Administrative Department of the State Council of China aiming to establish a safer and more stable living environment. GB/T 8624 Classification method for burning performance of building materials, GB/T 18586 Limit test for hazardous substances.

GB 中国国家标准，简称国标，由中国国务院标准化行政主管部门制定，为建立一个更安全、更稳定的生活环境。GB/T 8624 建筑材料燃烧性能分级方法，GB/T 18586 有害物质限量测试。



# Living With Design.



HYW-20011



HYW-20028



HYW-20016



HYW-20041



HYW-20033





# PRODUCT SPECIFICATION 产品规格

## RSVP & SPC 尺寸

Plank:

150 x 1220

180 x 1220

220 x 1220

305 x 1220

Tile:

305 x 610

457 x 610

## LOOSE LAY 尺寸

Plank:

184.15 x 1219.2

228.6 x 1219.2

228.6 x 1524

Tile:

457.2 x 457.2

457.2 x 609.6

304.8 x 609.6



914.4 x 914.4

## GLUE DOWN 尺寸

Plank:

169 x 1229

152.4 x 914.4

184.15 x 1219.2

228.6 x 1219.2

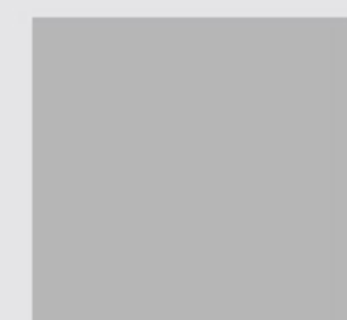
228.6 x 1524

Tile:

457.2 x 457.2

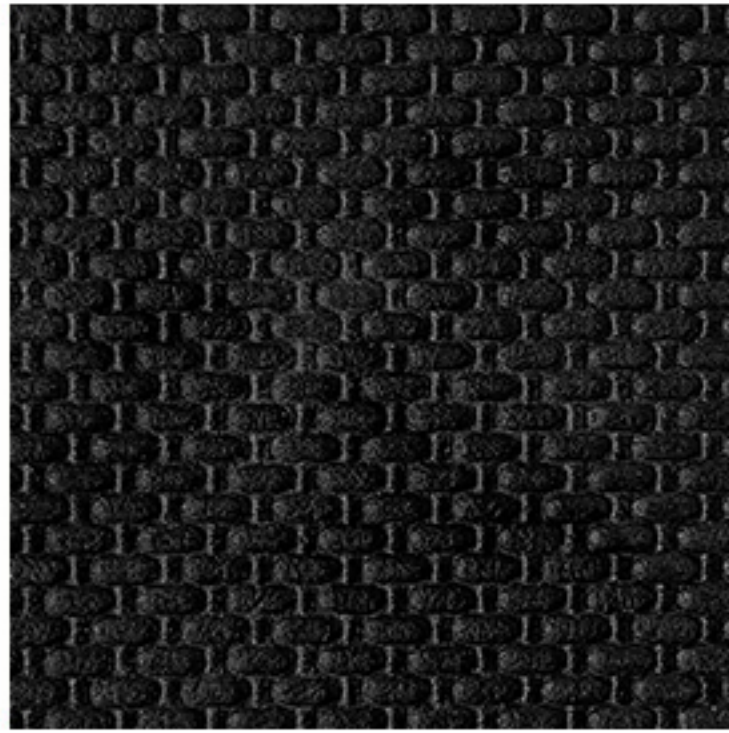
457.2 x 609.6

304.8 x 609.6



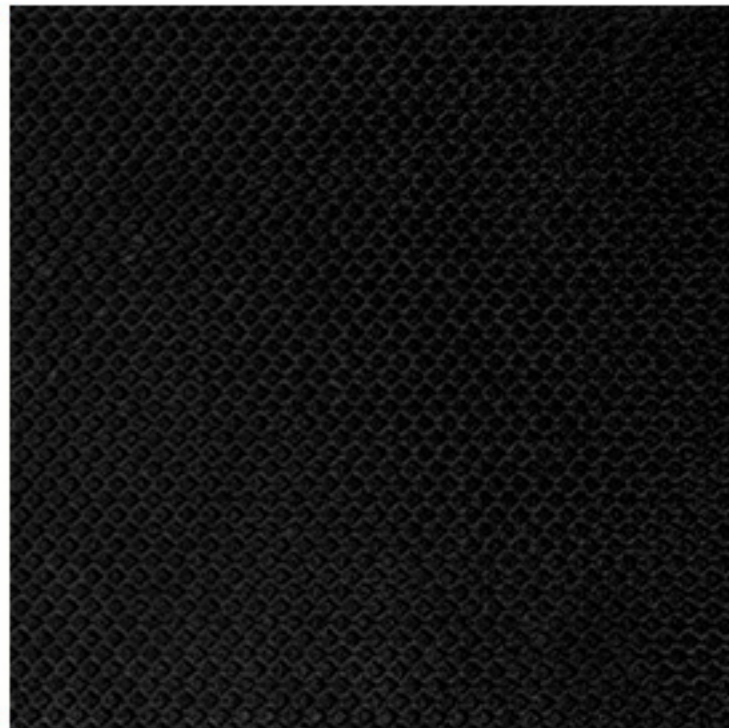
914.4 x 914.4

## ① SPC



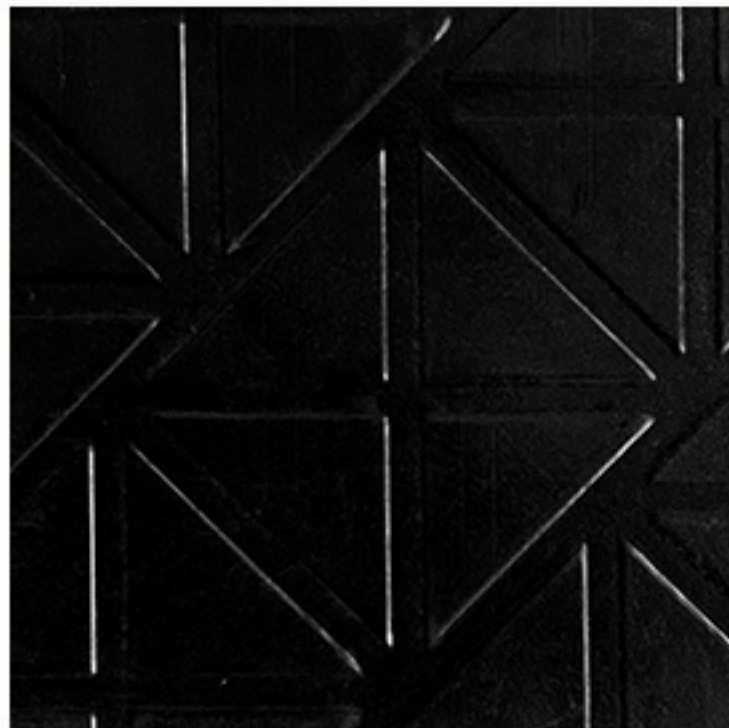
- ① High protection and resistance PU layer 耐磨PU涂层
- ② Layer of transparent PVC 0.3mm 耐磨层
- ③ Printed Decor 花色彩膜层
- ④ Rigid PVC 3.7 mm SPC基材
- ⑤ XPE 1.5mm(1mm, 2mm)

## ② RSVP



- ① High protection and resistance PU layer 耐磨PU涂层
- ② Layer of transparent PVC 0.55mm 耐磨层
- ③ Printed Decor 花色彩膜层
- ④ Vinyl layer LVT中料
- ⑤ Rigid PVC SPC基材
- ⑥ Vinyl layer LVT底料
- ⑦ XPE 2mm(1mm, 1.5mm)

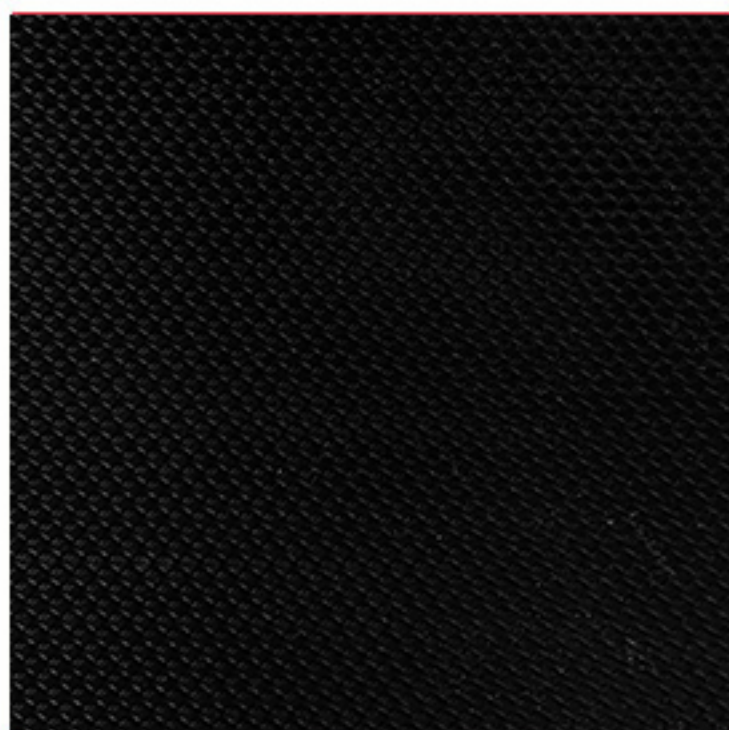
## ③ LOOSE LAY



Suction pad system  
antiskid unoclayment  
自沉吸压纹, 止滑底膜

- ① High protection and resistance PU layer 耐磨PU涂层
- ② Layer of transparent PVC 0.55mm 耐磨层
- ③ Printed Decor 花色彩膜层
- ④ PVC reinforced with fiberglass LVT+玻纤
- ⑤ Backing PVC with micro antiskid 止滑膜

## ④ LVT GLUE DOWN CLICK



- ① High protection and resistance PU layer 耐磨PU涂层
- ② Layer of transparent PVC 0.55mm 耐磨层
- ③ Printed Decor 花色彩膜层
- ④ PVC reinforced with fiberglass LVT+玻纤



木纹系列  
**WOOD SERIES**

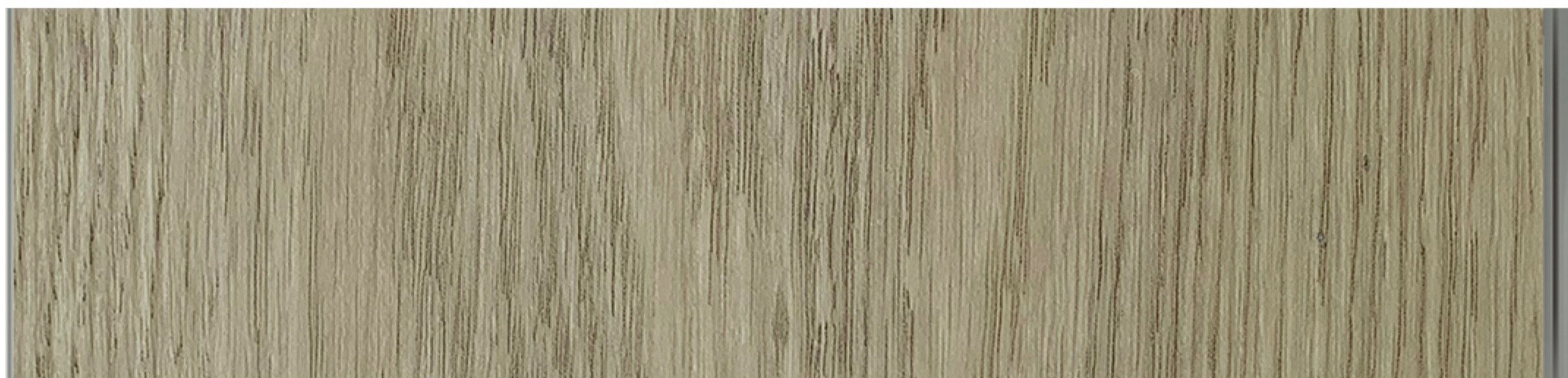
Thickness: 2.0mm-7.0mm  
Wear Layer: 0.2/0.3/0.55/0.7mm



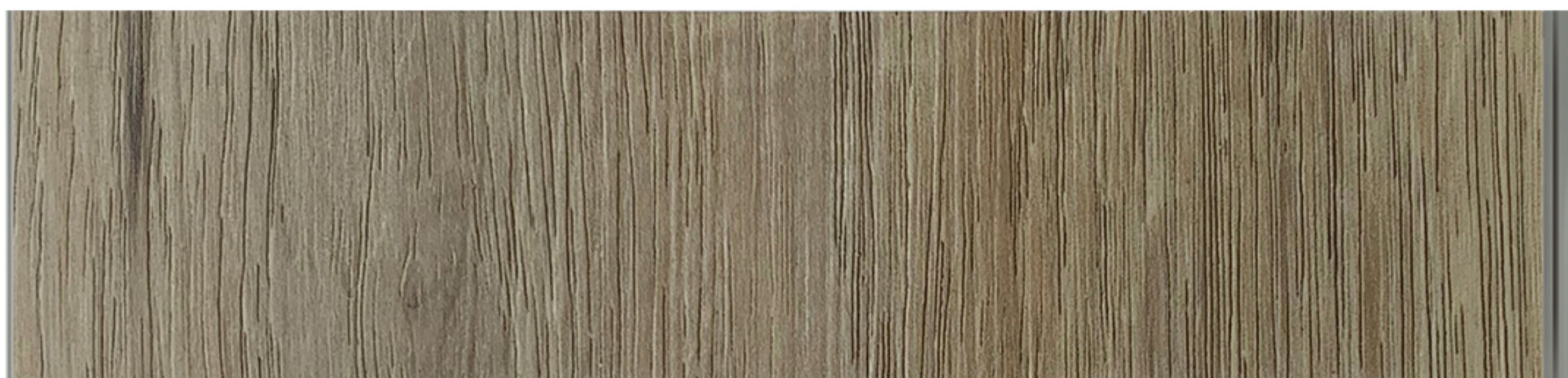
HYW-21001



HYW-21002



HYW-21003



HYW-21004



HYW-21005

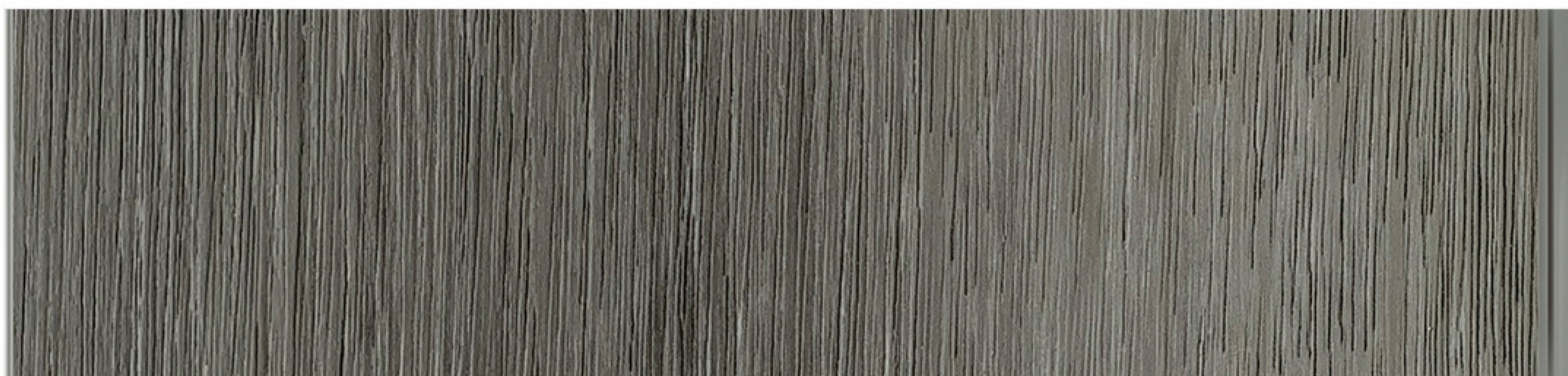


木纹系列  
**WOOD SERIES**

Thickness: 2.0mm-7.0mm  
Wear Layer: 0.2/0.3/0.55/0.7mm



HYW-21006



HYW-21007



HYW-21008



HYW-21009



HYW-21010



木纹系列

**WOOD SERIES**

Thickness: 2.0mm-7.0mm

Wear Layer: 0.2/0.3/0.55/0.7mm



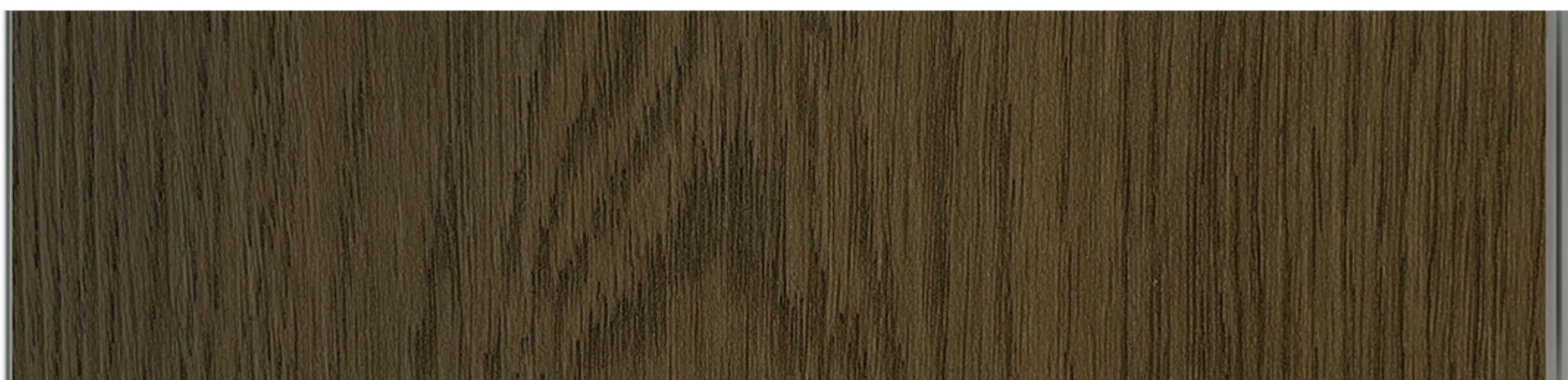
HYW-21011



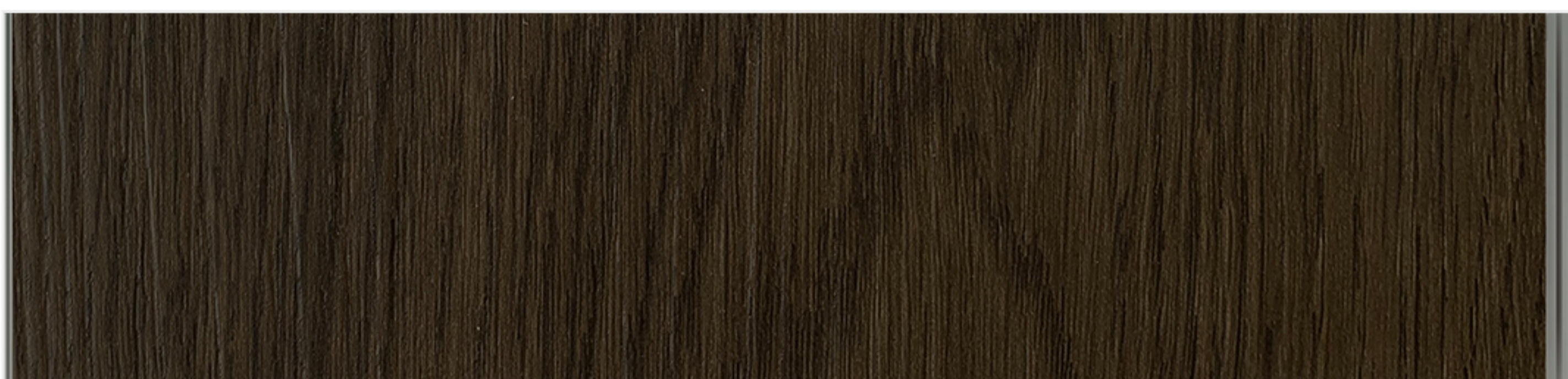
HYW-21012



HYW-21013



HYW-21014



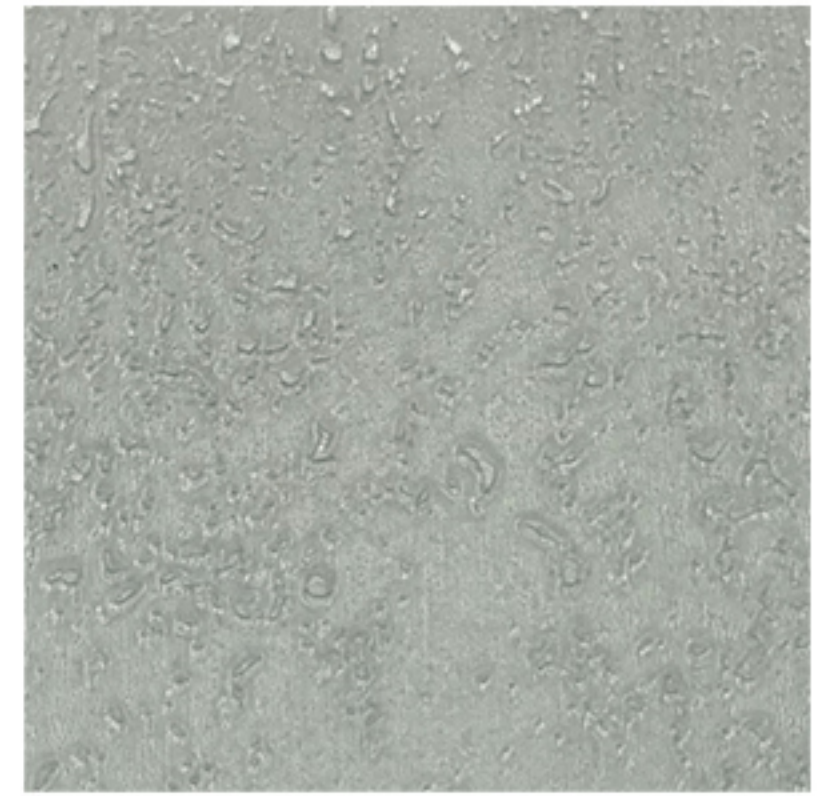
HYW-21015



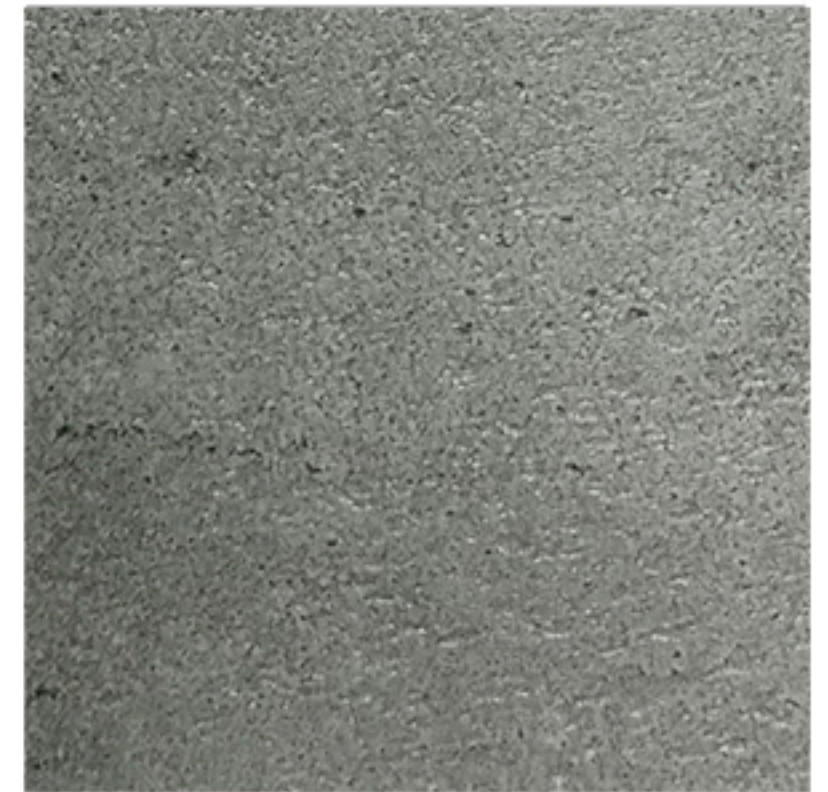
石纹系列 Thickness: 2.0mm-7.0mm  
**STONE SERIES** Wear Layer: 0.2/0.3/0.55/0.7mm



HYT-21017



HYT-21016



HYT-21018



HYT-21019



HYT-21020



HYT-21021





毯纹系列  
CARPET SERIES

Thickness: 2.0mm-7.0mm  
Wear Layer: 0.2/0.3/0.55/0.7mm



HYT-21022



HYT-21023



HYT-21024



HYT-21025



HYT-21026



HYT-21031



# SPC TECHNICAL DATA SHEET

## 技术参数

CHARACTERISTICS	TEST	GENERALLY USED-LVT
Thickness:		4.0mm-6.0mm
Density		1.9~2.0g/cm <sup>3</sup>
Wear Layer		0.3/0.55/0.7mm
Dimensional Stability	ISO23999:2008	X Direction: 0.08% Y Direction: 0.07%
Curling	ISO23999:2008	≤ 0.2mm
Residual Indentation	ISO24343-1:2007	~0.08mm
Light Stability	ISO105-B02:Method 3	≥ 6
Castor chair	EN 425	Typ W
Classification	EN ISO 10582	23, 31/33, 42/34, 43
Reaction to fire	EN13501-1	Bfl-S1
Slip Resistance	DIN 51130 EN 13893	R10 DS
Wear resistance	EN660-2	Group T
Determination of resistance to stains chemical resistance	ISO26987:2008	Resistant
Squareness	ISO24342:2007	Deviation range: X Direction: 0.00mm~+0.05mm Y Direction: 0.00mm~+0.05mm
Straightness	ISO24342:2007	Deviation range: X Direction: 0.00mm~+0.03mm Y Direction: 0.00mm~+0.05mm
Flexibility	ISO 24344:2008 Method A	There was no cracking shown in both directions when tested with a 20 mandreal
Peel resistance	ISO24345:2006	X Direction: 75N/50mm Y Direction: 75N/50mm
Burning cigarette test	EN1399:1997 Method B	Rating 3: Moderate change of gloss and moderate brown stain
Utilization		Recyclable



SGS

